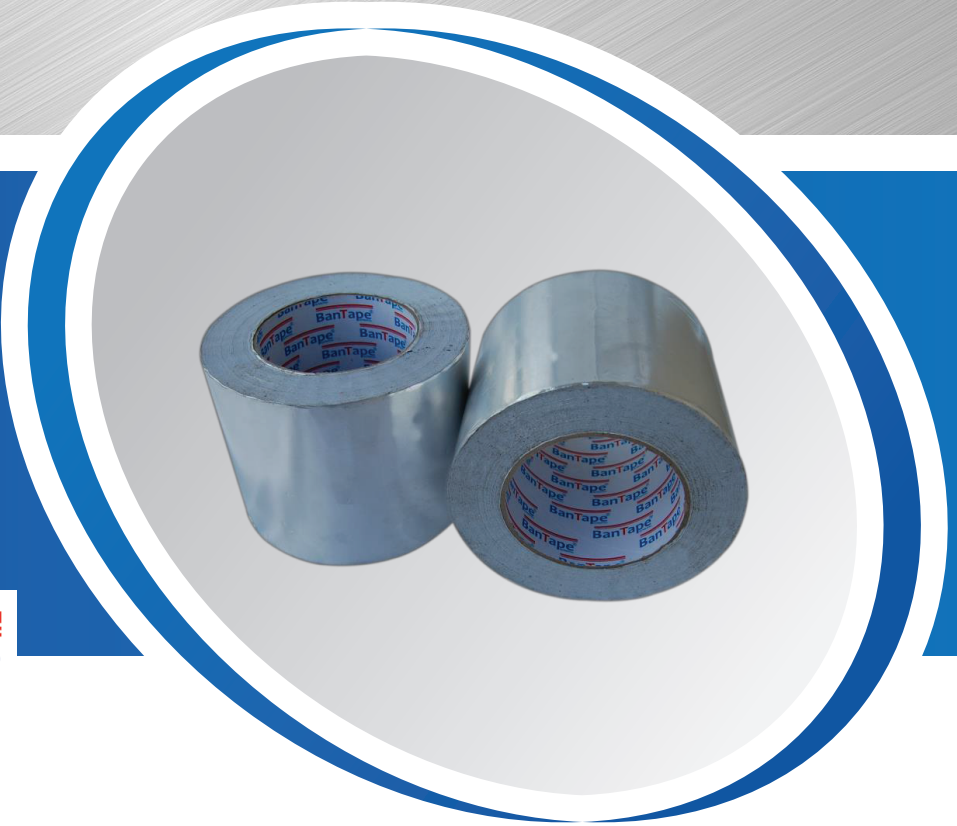




3025 CW/R

BanTape[®]
by Marinsu

ISTITUTO
GIORDANO
Qualità al Plurale.



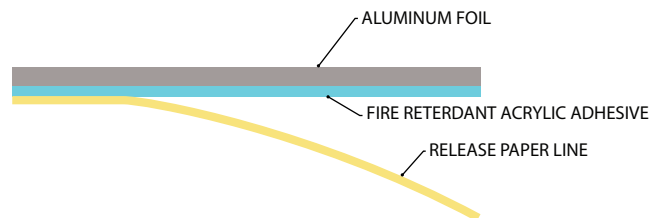
FEATURES

- Aluminum backing provides excellent reflection of both heat and light.
- Cold weather adhesive with moderate adhesion offers good sealing and bonding on
- Foil-Scrim-Kraft Facing joints and seams in HVAC ductwork application
- Good aging resistance both indoors and outdoors.
- Low moisture vapor transmission rate offers excellent sealing and patching performance.
- IMO Resolution MSC 61(67) Annex 1 Part 5 and Annex 2 IMO Resolution MSC 61(67) Annex 1 Part 2 and Annex 2
- UL 723 Listed (Flame/Smoke Rating)

DESCRIPTION

BanTape[®] 3025CW/R nominal 30 micron (1.2 mil) high tensile strength aluminum foil backing, combined with a cold weather flame retardant acrylic adhesive, protected by an easy-release silicone release paper. The workable foil applies easily to both fibrous and sheet metal ducts and conforms to irregular surfaces.

BanTape[®] 3025CW/R excels in demanding temperature and humidity applications and provides superior performance and durability over a wide range of environmental conditions.



PRODUCT USE

HVAC industry for joining and sealing Foil-Scrim-Kraft Facing laminated fiberglass blanket / duct board joints and seams; joining and sealing flexible air duct seams and connections. General purpose holding, patching, sealing and masking applications – indoors and outdoors

PRODUCT FORM & SIZE AVAILABLE

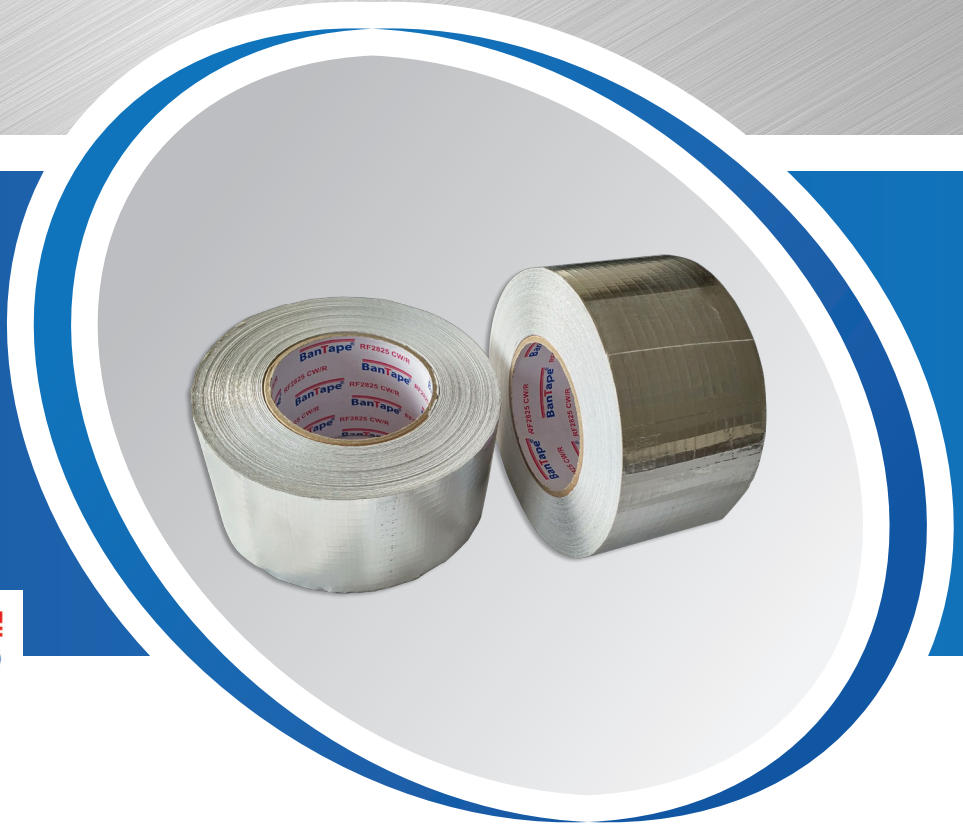
Cut Roll : 75mm (3") / 100mm (4")
Log Roll : 1200mm x 45 / 50m
Jumbo Roll : 1200mm x 1000m / 1200m / 1350m

IMPORTANT NOTE

1. The data above are typical values only, and should not be used for specifications purpose.
2. Tolerance: Weight and Thickness: $\pm 10\%$; Width: $\pm 3\text{mm}$; Length: Cut Roll: $\pm 0.3\text{m}$, Jumbo Roll $\pm 0.5\%$

TYPICAL PHYSICAL PROPERTIES

PROPERTIES	METRIC	ENGLISH	TEST METHOD
Backing Thickness	30 Micron	1,2 Mil	PSTC-133 / ASTM D 3652
Total Thickness	70 Micron	2,8 Mil	PSTC-133 / ASTM D 3652
Adhesion to Steel	15 N/25mm	54 Oz./In.	PSTC-101 / ASTM D 3330
Tack Rolling Ball	5 cm	2.0 In.	PSTC-6 / ASTM D 3121
Tensile Strength	45 N/25mm	10.2 Lb/In	PSTC-131 / ASTM D 3759
Elongation	3.0 %	3.0 %	PSTC-131 / ASTM D 3759
Service Temperature	-35 ~ +120 °C	31 ~ +248 °F	-----
Applying Temperature	-20 ~ +40 °C	-4 ~ +105 °F	-----
Fire Rating	IMO Resolution MSC61(67)	IMO Resolution MSC61(67)	IMO Resolution MSC 61(67) Annex 1 Part 5 and Annex 2 IMO Resolution MSC 61(67)Annex 1 Part 2 and Annex 2



BanTape[®]
by Marinsu



ISTITUTO
GIORDANO
Qualità al Plurale.



0407

FEATURES

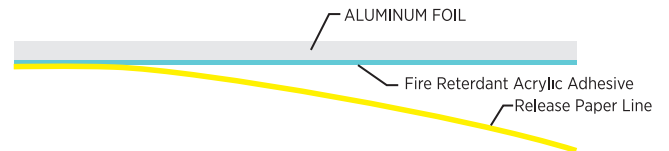
- **Foil-Scrim backing provides excellent reflection of both heat and light.**
- **High quality adhesive with super strong adhesion and holding power offers reliable and durable Foil-Scrim Facing joints and seams sealing in HVAC ductwork applications.**
- **Good aging resistance both indoors and outdoors.**
- **Low moisture vapor transmission rate makes Bantape[®] RF2825 CW/R an excellent vapor barrier.**
- **Service Temperature range from -30 ~ +120 °C (-22~ +248 °F).**

DESCRIPTION

Bantape[®] RF2825 CW/R Foil-Scrim backing (Foil: 28u / 2-way Scrim: 5x5mm), combined with a transparent high performance solvent acrylic adhesive, protected by an easy-release silicone release paper.

The workable foil applies easily to both fibrous and sheet metal ducts and conforms to irregular surfaces.

Bantape[®] RF2825 CW/R excels in demanding temperature and humidity applications and provides superior performance and durability over a wide range of environmental conditions.



TYPICAL APPLICATIONS

HVAC industry for joining and sealing Foil-Scrim Facing laminated fiberglass blanket / duct board / pipe sections on joints and seams; joining and sealing flexible air duct seams and connections. May also be used for other industrial uses requiring a tape with these characteristics and benefits.

PRODUCT USE

It is essential that the user evaluate the **Bantape**[®] RF2825 CW/R product to determine whether it is fit for a particular purpose and user's method of application. Good results will be obtained when applied to a clean, dry surface with a suitable pressure on **Bantape**[®] RF2825 CW/R products between +10 ~ +40°C (+50 ~ +105 F).

Surface Preparation

It is essential, as with all pressure-sensitive tapes, that the surface to which the tape is applied must be clean, dry, free of grease, oil or other contaminants.

Storage & Self Life

18 months when stored at 21 C (70 F) / 50% relative humidity out of direct sunlight.

PRODUCT FORM & SIZE AVAILABLE

Cut Roll : 75mm (3") / 100mm (4")
Log Roll : 1200mm x 45 / 50m
Jumbo Roll : 1200mm x 1000m / 1200m / 1350m

IMPORTANT NOTE

1. The data above are typical values only, and should not be used for specifications purpose.
2. Tolerance: Weight and Thickness: 10%;
Width: 3mm; Length: Cut Roll: 0.3m, Jumbo Roll 0.5%.

TYPICAL PHYSICAL PROPERTIES

PROPERTIES	METRIC	ENGLISH	TEST METHOD
Backing Thickness	43 Micron	1.7 Mil	PSTC-133 / ASTM D 3652
Total Thickness	83 Micron	3.3 Mil	PSTC-133 / ASTM D 3652
Adhesion to Steel	15 N/25mm	52,5 Oz./In.	PSTC-101 / ASTM D 3330
Tack Rolling Ball	20 cm	8.0 In.	PSTC-6 / ASTM D 3121
Tensile Strength	100 N/25mm	22.7 Lb/In	PSTC-131 / ASTM D 3759
Elongation	3.0 %	3.0 %	PSTC-131 / ASTM D 3759
Service Temperature	-35 ~ +120 °C	-31 ~ +248 °F	-----
Applying Temperature	-10 ~ 40 °C	-4 ~ +105 °F	-----



G11025 CW/R

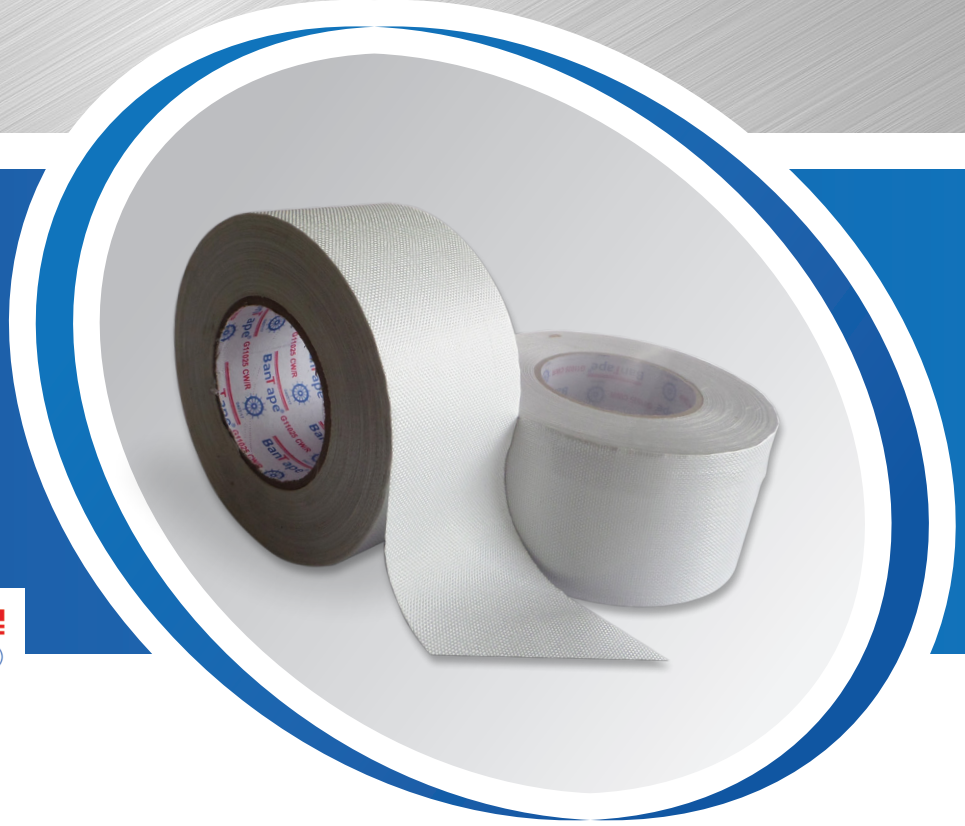
BanTape[®]
by Marinsu



ISTITUTO
GIORDANO
Qualità al Plurale.



0407

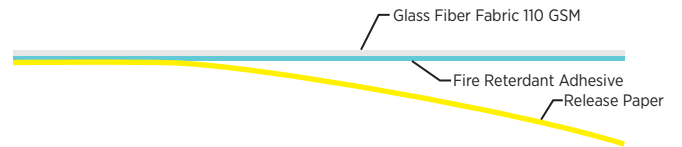


FEATURES

- Glass Cloth backing provides excellent reflection heat.
- High quality adhesive with super strong adhesion and holding power offers reliable and durable Glass Cloth Facing joints and seams sealing in marine and industrial thermal insulation application, Good aging resistance both indoors and outdoors.
- Low moisture vapor transmission rate offers excellent sealing and patching performance.
- IMO Resolution MSC 61(67) Annex 1 Part 5 and Annex 2 IMO Resolution MSC 61(67) Annex 1 Part 2 and Annex 2

DESCRIPTION

Bantape[®] G11025 R/CW Glass Cloth backing (8x8 Mesh, 110 GSM Glass Cloth), combined with a high performance flame retardant cold weather solvent acrylic adhesive, protected by an easy-release silicone release paper.



TYPICAL APPLICATIONS

HVAC industry for joining and sealing Foil-Scrim-Kraft Facing laminated fiberglass blanket / duct board joints and seams; joining and sealing flexible air duct seams and connections. General purpose holding, patching, sealing and masking applications - indoors and outdoors

PRODUCT USE

It is essential that the user evaluate the **BanTape**[®] **G11025 R/CW** Glass Cloth Tape product to determine whether it is fit for a particular purpose and user's method of application. Good results will be obtained when applied to a clean, dry surface with a suitable pressure on **BanTape**[®] **G11025 R/CW** Glass Cloth Tape products between +10 ~ +40°C (+50 ~ +105 °F).

Surface Preparation

It is essential, as with all pressure-sensitive tapes, that the surface to which the tape is applied must be clean, dry, free of grease, oil or other contaminants.

Storage & Self Life

18 months when stored at 21°C (70°F) / 50% relative humidity out of direct sunlight.

The utilization of **BanTape**[®] **G11025 R/CW** Glass Cloth Tape must be checked with shipyard respectively class surveyor before installation.

BanTape[®] **G11025 R/CW** Glass Cloth Tape should be additionally pressed on the Isover glass cloth faced minerwool products with a scraper.

The right contact pressure of the **BanTape**[®] **G11025 R/CW** Glass Cloth Tape on faced light weight mineral wool products should be considered sufficiently.

PRODUCT FORM & SIZE AVAILABLE

Cut Roll : 75mm (3") / 100mm (4")
Log Roll : 1200mm x 45 / 50m
Jumbo Roll : 1200mm x 1000m / 1200m / 1350m

IMPORTANT NOTE

1. The data above are typical values only, and should not be used for specifications purpose.
2. Tolerance: Weight and Thickness: ±10%; Width: ±3mm; Length: Cut Roll: ±0.3m, Jumbo Roll ±0.5%

TYPICAL PHYSICAL PROPERTIES

PROPERTIES	METRIC	ENGLISH	TEST METHOD
Backing Thickness	102 Micron	4.0 Mil	PSTC-133 / ASTM D 3652
Total Thickness	148 Micron	5.8 Mil	PSTC-133 / ASTM D 3652
Adhesion to Steel	15 N/25mm	54 Oz./In.	PSTC-101 / ASTM D 3330
Tack Rolling Ball	5 cm	2.0 In.	PSTC-6 / ASTM D 3121
Tensile Strength	450 N/25mm	102.0 Lb/In	PSTC-131 / ASTM D 3759
Elongation	3.6 %	3.6 %	PSTC-131 / ASTM D 3759
Service Temperature	-30 ~ +120 °C	-22 ~ +248 °F	-----
Fire Rating	IMO Resolution MSC61(67)	IMO Resolution MSC61(67)	IMO Resolution MSC 61(67) Annex 1 Part 5 and Annex 2 IMO Resolution MSC 61(67)Annex 1 Part 2 and Annex 2